

➤ Most Powerful Direct Part Mark (DPM) Handheld Barcode Reader

DataMan 8600 series handheld barcode readers combine Cognex's most powerful algorithms, 2DMax+™ and 1DMax+™ with Hotbars™. This powerful combination enables the DataMan 8600 series to read the most challenging DPM barcodes in the most demanding industrial environments.

➤ Most Advanced Handheld Imaging System

The DataMan 8600 series features an improved UltraLight®, a high-speed image sensor, and a new liquid lens with a large depth-of-field. These technical advancements allow the DataMan 8600 readers to image barcodes faster and easier on the widest range of surfaces and at distances both near and far.

➤ Exclusive Modular Industrial Communications

The DataMan 8600 features Ethernet communication with industrial protocols enabling easy integration with industrial automation equipment. Additional industry standard communication options include USB, RS-232 and Bluetooth communication to an intelligent base station. Field interchangeable communication modules mean one reader can be configured to meet specific and ever changing communication needs.

DataMan 8600 readers are equipped with the most advanced barcode reading algorithms and are capable of reading the most challenging DPM codes on the widest variety of surfaces, and using the widest range of marking methods. Patented lighting and liquid lens technology makes the DataMan 8600 the most powerful and flexible handheld barcode reader available. Ethernet communication enables direct communication between DataMan 8600 readers and industrial PLCs and factory networks.



High Speed Versatility with Ultimate Reading Performance

- Best-in-class patented 2DMax+ algorithms read low contrast, scraped, damaged, obstructed and small DPM codes. Supported 2-D symbologies include: DataMatrix, QR, PDF417, MaxiCode and Aztec.
- Cognex's patented 1DMax+ with Hotbars algorithms enable the DataMan 8600 barcode reader to decode the most challenging 1-D barcodes quickly and easily, at more angles and in any orientation.
- The DataMan 8600 readers incorporate Cognex's improved patented UltraLight® technology for superior image formation on any mark type and surface. UltraLight illumination provides dark field, bright field and diffuse lighting all in one electronically controlled light.

The Industry's most challenging reading applications

DataMan 8600 readers are ideal for applications in any manufacturing environment that require robust DPM and label-based barcode technology and unparalleled reading capability:

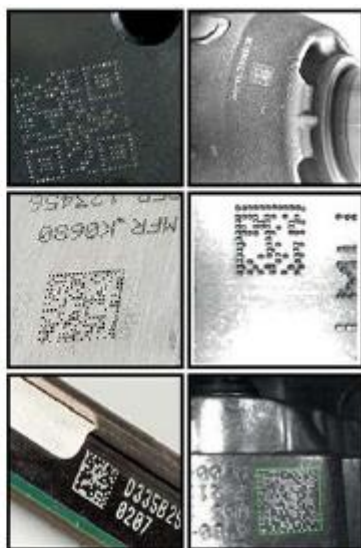


- Engine assembly
- Transmission assembly
- Automotive kitting
- Aerospace
- Incoming inspection
- Oil and gas
- Electronic manufacturing

Cognex® DataMan 8600 readers set the performance standard when it comes to industrial barcode reading. Industry-leading DataMan handheld readers introduce several performance milestones in industrial handheld scanner capabilities. To learn more about the DataMan 8600, 8050X and 8050 handheld ID readers, visit www.cognex.com/dataman.

Flexible and Easy Integration

Industrial Ethernet communication enables DataMan 8600 handheld readers to be easily integrated with industrial PLCs and factory networks. These handheld barcode readers support the CognexConnect suite of industrial protocols, such as EtherNet/IP, PROFINET, Modbus TCP and MC Protocol. DataMan 8600 corded readers have a direct Ethernet connection, while the wireless readers have Ethernet connectivity between the intelligent base station and the network.



Specifications

Dimensions	220 mm x 115 mm x 85 mm
Weight	326 g
Operating Temperature	0°C to 40°C (32°F to 104°F)
Storage Temperature	-40°C to 60°C (-40°F to 140°F)
Maximum Humidity	95% (non-condensing)
Material	Polycarbonate housing with overmold
Imager	1280 x 1024 High Resolution Sensor
Aiming	Laser Aimer, Class 1 and Class 2
Status Outputs	LED, Beeper and Vibration
Communications	Serial Module: RS-232, USB
	Ethernet Module: TCP/IP, FTP, Industrial Protocols: EtherNet/IP, PROFINET, MC Protocol, Modbus TCP
	Intelligent Base Station: RS-232, USB, Ethernet, Industrial Protocols
Symbologies	Bluetooth module communicates to intelligent base station
	1-D: UPC/EAN/JAN, Codabar, Interleaved 2 of 5, Code 39, Code 128, Code 93, Pharmacode, POSTNET, PLANET Code, GS1 Databar, IMB, Postal
Lighting	2-D: Data Matrix, QR, MicroQR, PDF417, MaxiCode, Aztec, Micro PDF417
	UltraLight integrated bright field, dark field, diffuse illumination
Optics	Variable focus liquid lens (0 to over 500 mm depending on code element size)
Power Supply Requirements	DataMan 8600 with Serial/USB: 5V - 6V DC, 5.0 W maximum LPS or NEC Class 2 power supply
	DataMan 8600 with Ethernet: PoE Class 2 power supply
	DataMan 8600 with Bluetooth: 3.7V, 3100 mAh Li-ion battery
	DataMan Intelligent Base Station: 24V, 13W maximum LPS or NEC Class 2 power supply
Environmental	Compliant with RoHS directive 2002/98/EEC
Regulatory	Electrical: CE, CSA, UL60950, EN/IEC 60950-1 EMI/RFI FCC Part15, CE (EMC and R&TTE Directives), ICES-003, RSS-210 Issue 8, KCC
Data Validation	US DoD UID Guidelines, GS-1, ISO15434 and ISO15418
Operating System	Microsoft® Windows® XP, Windows 7 and Windows 8



Contact:

ORITRONIC SDN BHD

No 11A Jalan TPP 1/13. Taman Industri Puchong, 47100 Puchong Selangor

T: (603) 8062 2681 / 4681

F: (603) 8060 3681

E: enquiry@oritronic.com.my

W: www.oritronic.com.my