

IN-SIGHT 2000 SERIES VISION SENSORS

In-Sight® 2000 series vision sensors combine the power of an In-Sight vision system with the simplicity and affordability of a vision sensor. Ideal for solving error-proofing applications, these vision sensors set new standards for value, ease of use and flexibility thanks to a powerful combination of proven In-Sight vision tools, a simple setup, and a modular design featuring field changable lighting and optics.

Powerfully simple and affordable vision sensors

Unmatched flexibility

Field interchangeable lighting and optics make it easy to adapt to virtually any production line environment.

Powerful integrated light

Diffuse illumination technology enables robust vision inspection in the most challenging environments—without the need for costly external lighting.

The simple set up of EasyBuilder

Ease-of-use is built into the heart of the In-Sight 2000 series starting with powerful vision tools and an In-Sight Explorer software interface that makes set up simple and assures a seamlessly reliable communications link to other factory automation equipment.

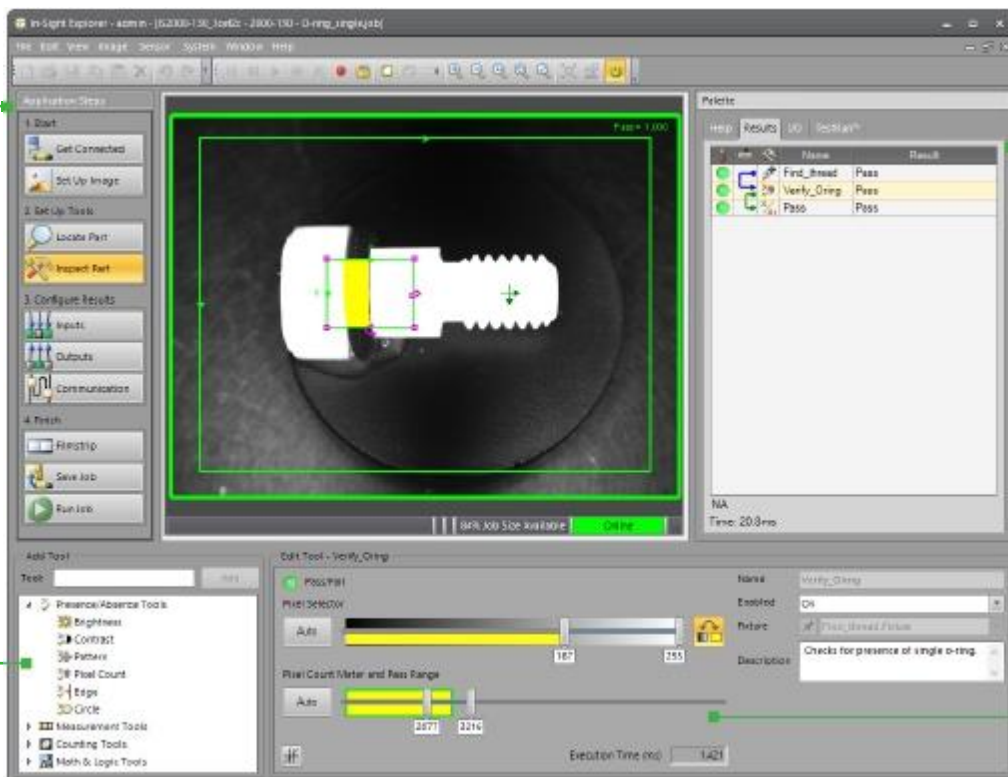


Simple steps guide you through configuring and deploying your application

Choose tools from the list to add them to your inspection

See inspection results at a glance

Point and click controls make it quick and easy to set up any tool to achieve reliable results



Three In-Sight 2000 models

All In-Sight 2000 series vision sensors offer easy application development with the step-by-step EasyBuilder interface. The In-Sight 2000-110 and In-Sight 2000-120 models offer Pass/Fail inspection capabilities. The In-Sight 2000-130 model features a significantly expanded range of location, pixel counting, brightness, contrast, measurement and counting vision tools.



		IN-SIGHT 2000 MODELS		
		2000-110	2000-120	2000-130
User Interface		In-Sight Explorer EasyBuilder		
Imager	Type	1/3 inch CMOS, monochrome		
	Image Resolution	640 x 480 pixels (standard)	640 x 480 pixels (standard) 640 x 480 pixels (2x magnification)	640 x 480 pixels (standard) 640 x 480 pixels (2x magnification) 800 x 600 pixels (2x magnification)
	Acquisition Rate	20 fps	40 fps	
Lens	Standard M12 Lens	8 mm		
	Optional M12 Lenses	3.6 mm, 6 mm, 12 mm, 16 mm, 25 mm		
Lighting	Standard	8-LED diffuse ring light (white)		
	Options	8-LED diffuse ring lights (red and IR)		
		Light filters (red and IR) and polarized light cover		
Vision Tools	Part Location	Pattern	Pattern	Pattern Edge Circle
	Part Inspection	Pattern	Pattern Pixel count Contrast Brightness	Pattern Pixel count Contrast Brightness Edge Circle
	Measurement			Distance Angle Circle diameter
	Counting			Pattern Edge
Communications & I/O	Protocols	Ethernet, EtherNet/IP, PROFINET, SLMP, SLMP Scanner, FTP, RS-232 Text	Ethernet, EtherNet/IP, PROFINET, SLMP, SLMP Scanner, FTP, RS-232 Text	Ethernet, EtherNet/IP, PROFINET, SLMP, SLMP Scanner, TCP/IP, UDP, FTP, RS-232 Text
	Connections	M12: Ethernet M12: Power, I/O and Serial		
	Inputs	2 (1 trigger, 1 general purpose)		
	Outputs	4 (general purpose)		
Mechanical	Dimensions	98 mm x 68 mm x 45 mm		
	Weight	200 g		
Operating	Power	5–24 VDC		
	Operating Temperature	4–40 °C		